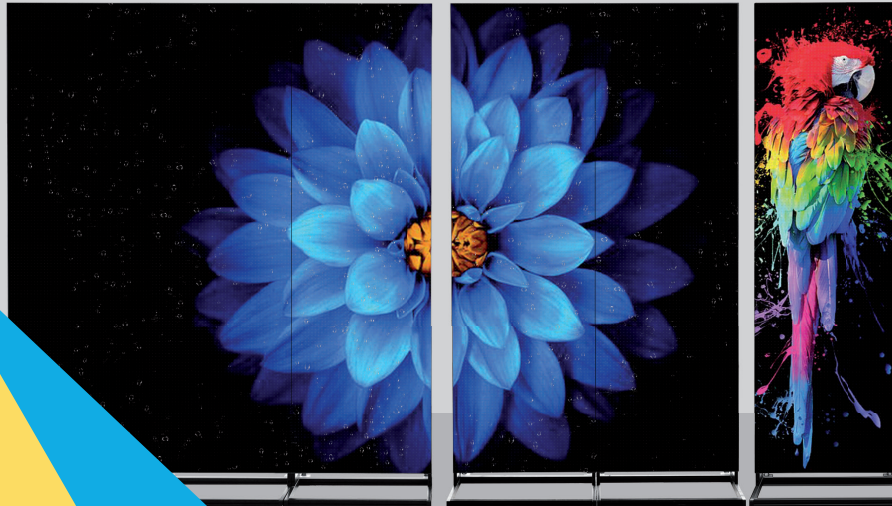




Click here to
**REQUEST
INFORMATION**



TOTEM Indoor LED display



**TOTEM - INDOOR
DIGITAL LED
DISPLAY**



- Integrate R&D, design, manufacturing, sales and service.
- NSE Providing LED poster solutions with unique design and stable performance
- Light Weight & Ultra-thin Frame
- Smart Control & Multiple-unit Cascade
- Wide Applicability, Indoor and Outdoor Models Available
- Fast Delivery, in stock ready for shipment



STABLE PERFORMANCE

Wide operating temperature range (-40°C ~ +75°C) and high humidity resistant

Quality Control check before shipping

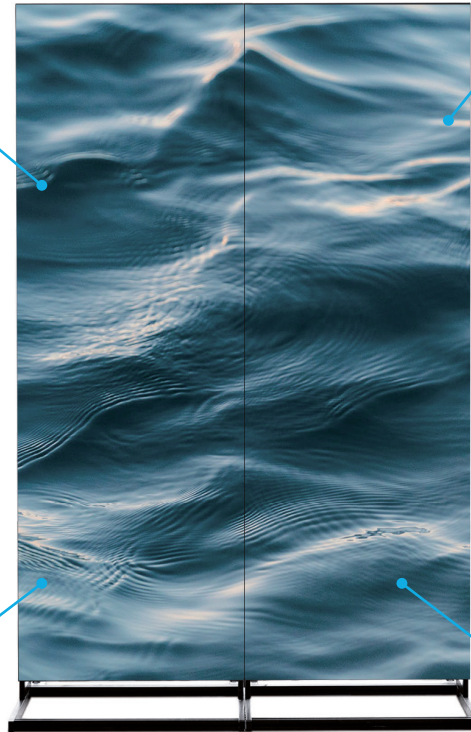


The NSELED Totem Series has FCC/CE/ROHS/ISO Certifications.

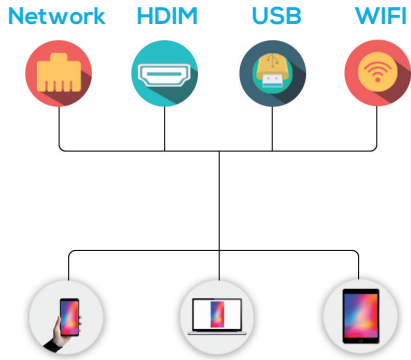


Aging test

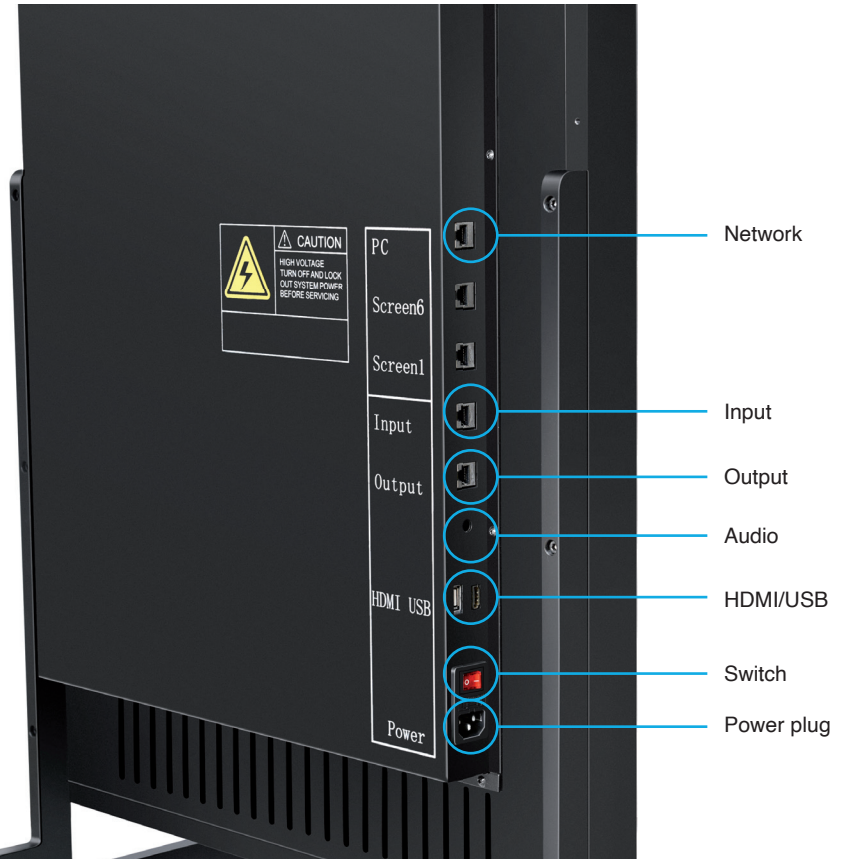
Vibration test



▶ SMART CONTROL



- Synchronous & Asynchronous Dual-mode Media Player
- Real-time Zoom In And Out
- 8 GB Memory
- Supports USB Expansion
- With HDMI Interface and Audio Port



MULTIPLE INSTALLATION METHOD

ONE DEVICE FOR MULTIPLE USES

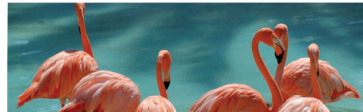
Free - Standing



Wall - Mounted



Hanging



Creative Stitching



▶ PLUG AND PLAY

Our Totems are designed to be user-friendly: no complicated setting to fix, no new devices to buy to have a thorough experience, no particular skills needed to be capable of using them.

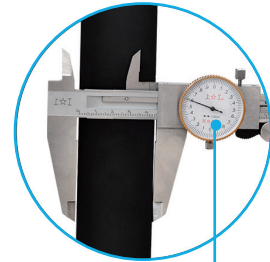
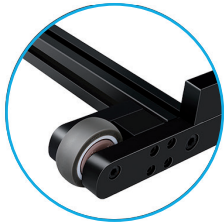
You just have to plug them in and they are good to go!

Can automatically play video, pictures, text, and other programs.



LIGHT WEIGHT & ULTRA-THIN ◀

- LIGHTWEIGHT
- ULTRA-THIN FRAME



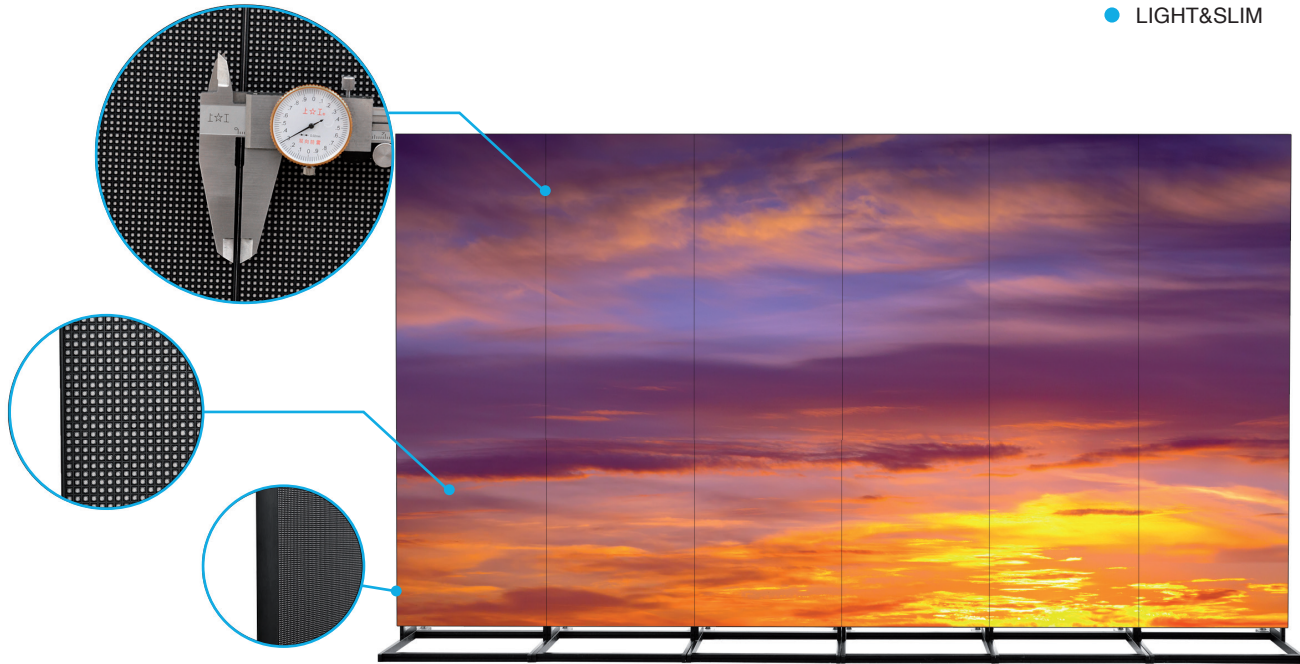
45mm

38 KG



▶ MULTI - SCREEN SPLICING

- MULTIPLE-UNIT SPLICING
- ULTRA-HIGH RESOLUTION
- ULTRA-THIN
- LIGHT&SLIM



APPLICABILITY



- SHOPPING MALLS 
- HOTELS 
- BANK 
- BARS 
- STORES 
- HOSPITAL 
- RESTAURANTS 
- SCHOOL 
- EXHIBITIONS 
- EVENTS 



▶ PIXEL CONTRAST

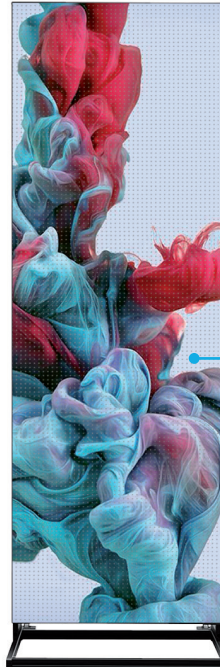
TOTEM P3
INDOOR DIGITAL LED DISPLAY



35 KG

57 cm

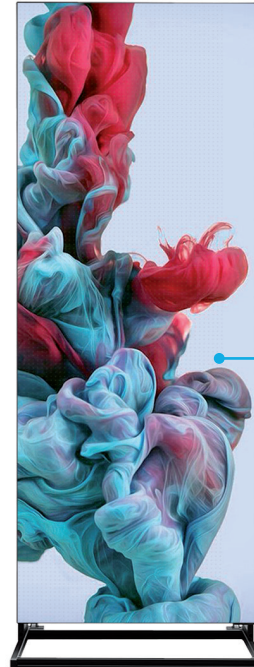
TOTEM P2.5
INDOOR DIGITAL LED DISPLAY



38 KG

64 cm

TOTEM P2
INDOOR DIGITAL LED DISPLAY



46 KG

77 cm



EXTERNAL DEVICE COMPATIBLE ◀



◀ BRIGHTNESS AUTOMATIC ADJUSTMENT ▶

To achieve a better advertising effect, Totem is designed to be connected with the speaker. Totem can also support interactive functions (customizable).



▶ INDOOR AND OUTDOOR LED DISPLAY

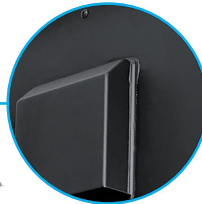
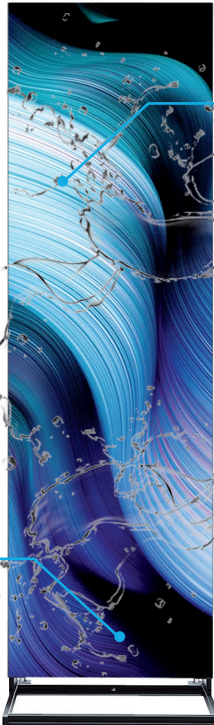
TOTEM OUTDOOR



BRIGHTNESS



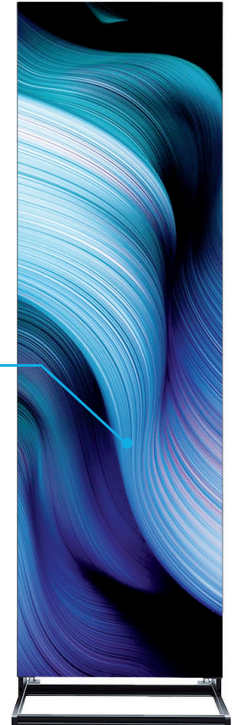
WATERPROOF



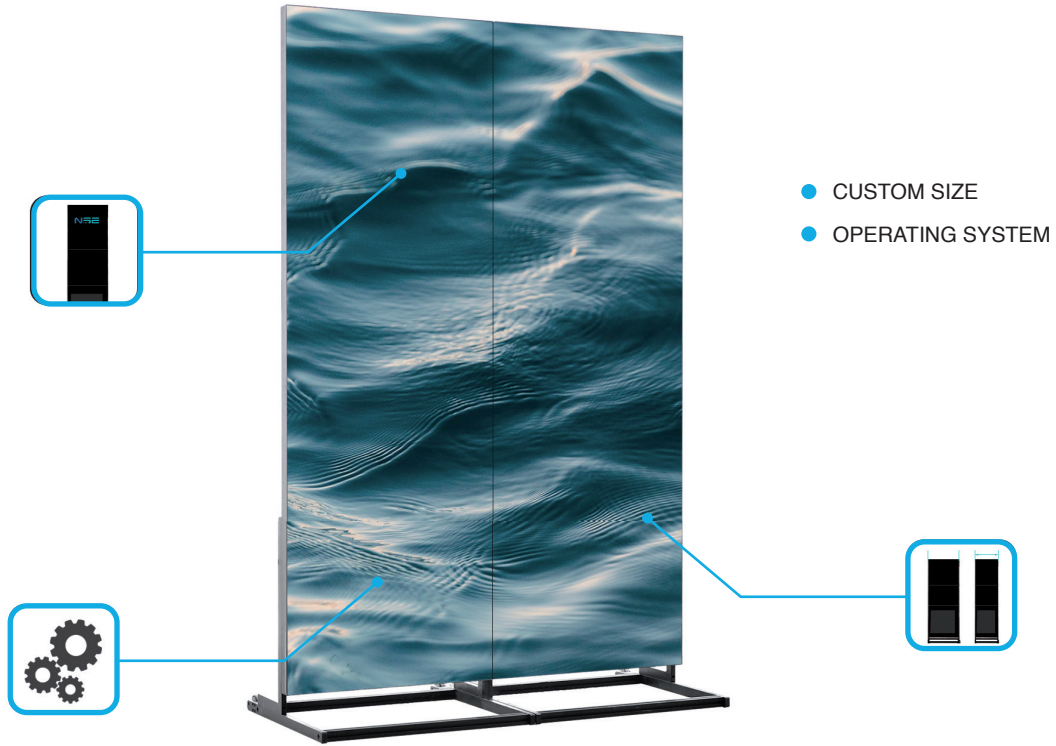
TOTEM INDOOR



BRIGHTNESS



CUSTOMIZATION SERVICE

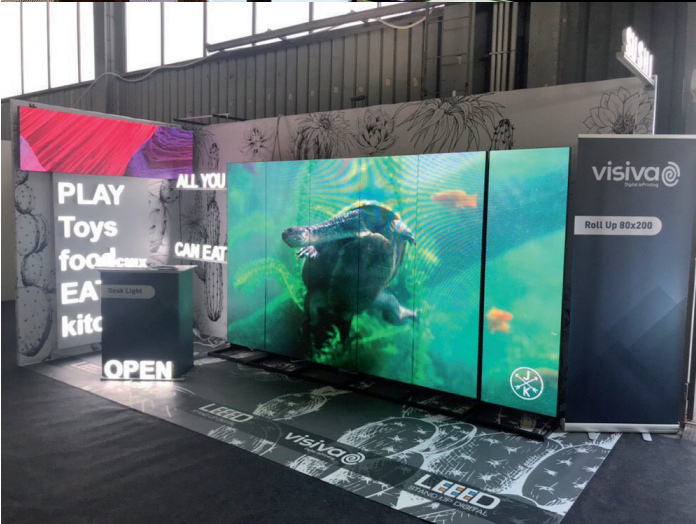


▶ ALWAYS IN STOCK SERVICE

Our hot-selling items are always in stock.
So that customers don't have to wait for
more than 10 days of production time.

We have freight forwarders that have
cooperated for many years.
So that when you inquire about freight,
we can give the most cost-effective
freight plan faster.





SPECIFICATION

Model Type	PT2	PT2.5	PT3
Pixel pitch	2mm	2.5mm	3 mm
Density	250,000 dots /SQM	160,000 dots /SQM	111,111 dots /SQM
LED Type	SMD1515 Mat Black	SMD 2121 Mat Black	SMD 2121 Mat Black
Pixel type(R / G / B)	1R1G1B (3 in 1)	1R1G1B (3 in 1)	1R1G1B (3 in 1)
Module size	256 x 128mm	160 x 160mm	192 x 192mm
Module Resolution	128*64pixel	64*64pixel	64*64 pixel
Screen Size (H*W)	768*1920mm	640*1920mm	576*1920mm
Feet Size	2.52 * 6.3 feet	2.10* 6.3 feet	1.88 * 6.3 feet
Screen Resolution	384 * 960 pixel	256 * 768 pixel	192 * 640 pixel
Frame Size	1930mm(H)*776mm(W)*45mm(T)	1930mm(H)*648mm(W)*45mm(T)	1930mm(H)*584mm(W)*45mm(T)
Case Material	Aluminum	Aluminum	Aluminum
Weight	46kg/ unit	38kg/ unit	35kg/ unit
Drive mode	1/32 Scan	1/32 Scan	1/16 Scan
Viewing Distance	≥ 2 M	≥ 2.5 M	≥ 3 M
Brightness	≥ 1,000 cd/m ²	≥ 1,000 cd/m ²	≥ 1,000 cd/m ²
Viewing Angle	140° (H)/140°(V)	140° (H)/140°(V)	140° (H)/140°(V)
Refresh rate	≥1,920 Hz (3840HZ optional)	≥1,920 Hz (3840HZ optional)	≥1,920 Hz (3840HZ optional)
Input voltage	AC90-240V	AC90-240V	AC90-240V
Maximum Power Consumption	1170Wper unit	750Wper unit	600W per unit
Average Power Consumption	350Wper unit	220Wper unit	280W per unit
Control method:	Asynchronous(WIFI/USB/LAN/HDMI)	Asynchronous (WIFI/USB/LAN/HDMI)	Asynchronous (WIFI/USB/LAN/HDMI)
Temperature Operating (°C)	-40°~+75°	-40°~+75°	-40°~+75°
Working Humidity	10%~95%RH	10%~95%RH	10%~95%RH
IP Rating	IP20	IP20	IP20
Application	Indoor/ Semi-Outdoor	Indoor/ Semi-Outdoor	Indoor/ Semi-Outdoor
Certificate	CE/ROHS/FCC	CE/ROHS/FCC	CE/ROHS/FCC

NSELED Europe srl
Via Marco d'Agate, 41/B
20139 Milano Italia
info@nseled.eu
T. 02 40707210



For more information
www.nseled.eu

