



The OTV Series

**ENERGY
SAVING** 

DOOH LED System





**OTV Series
1000*500**



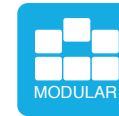
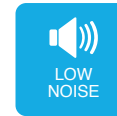
**OTV Series
960**



**OTV Series
1000**



► DESIGN, EFFICIENCY, BRIGHTNESS



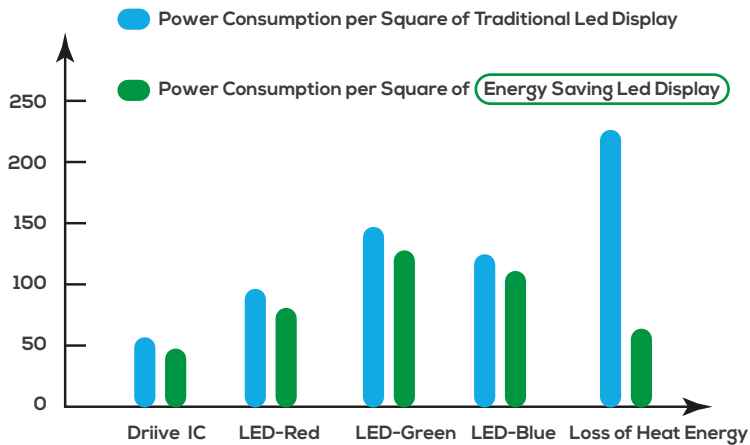
- Unique and modular design, ultra slim & lightweight
- Both front&rear service for easy installation
- Energy-saving design
- High brightness up to 8,000 nits
- Lower temperature heating

▶ MAIN FEATURES



▶ ENERGY SAVING

- ▶ 40-50% Energy Saving
- ▶ Low circuit loss for energy saving



Energy Saving:

$$0.16\text{kw/hour.m}^2 * 1\text{m}^2 * 12\text{hours} * 365\text{days} * 0.2\text{USD/KW} = 140.16\text{USD/m}^2$$

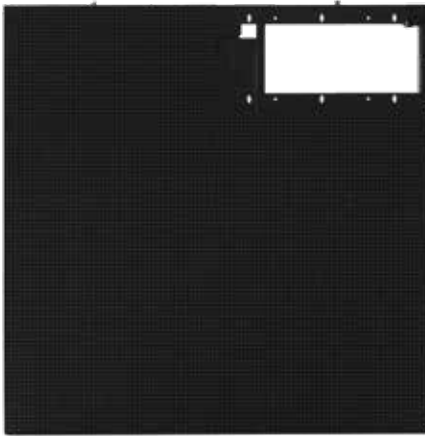
Non Energy Saving:

$$0.30\text{kw/hour.m}^2 * 1\text{m}^2 * 12\text{hours} * 365\text{days} * 0.2\text{USD/KW} = 262.8\text{USD/m}^2$$

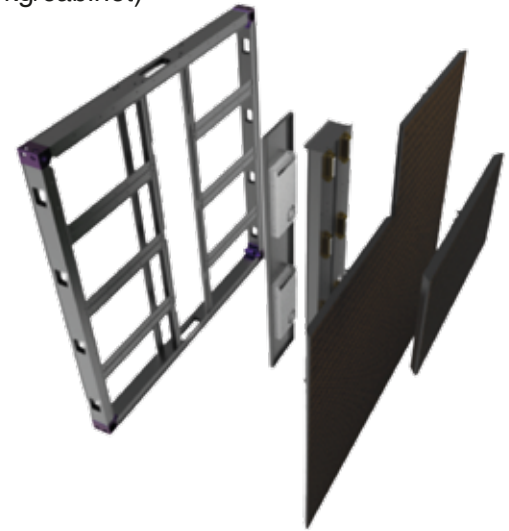
▶ FRONT AND REAR SERVICE

- ▶ Support both front/rear maintenance Saving time and cost for future maintenance

Super slim aluminum cabinet: only 60mm thickness and ultra light weight (24 kg/cabinet)



Full Front Service



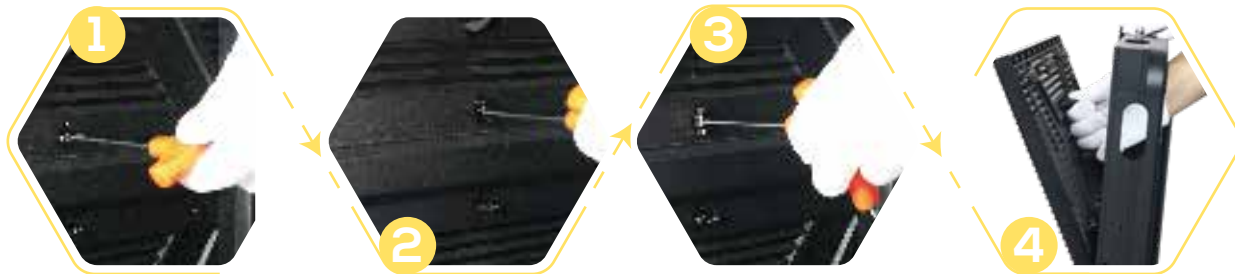
Full Back Service



▶ MAINTENANCE STEPS



Front Service: remove screws with front maintenance tool



Back Service: 3 steps to open the lock on the back of the module



▶ CURVED INSTALLATION

- ▶ The LED module and cabinet are equipped with 90° bevels
- ▶ Support customized 90° seamless splicing

Strong visual impact with 3D performance



▶ INSTALLATION 2.0

▶ International Certifications



Wall-mounted



Front-installation

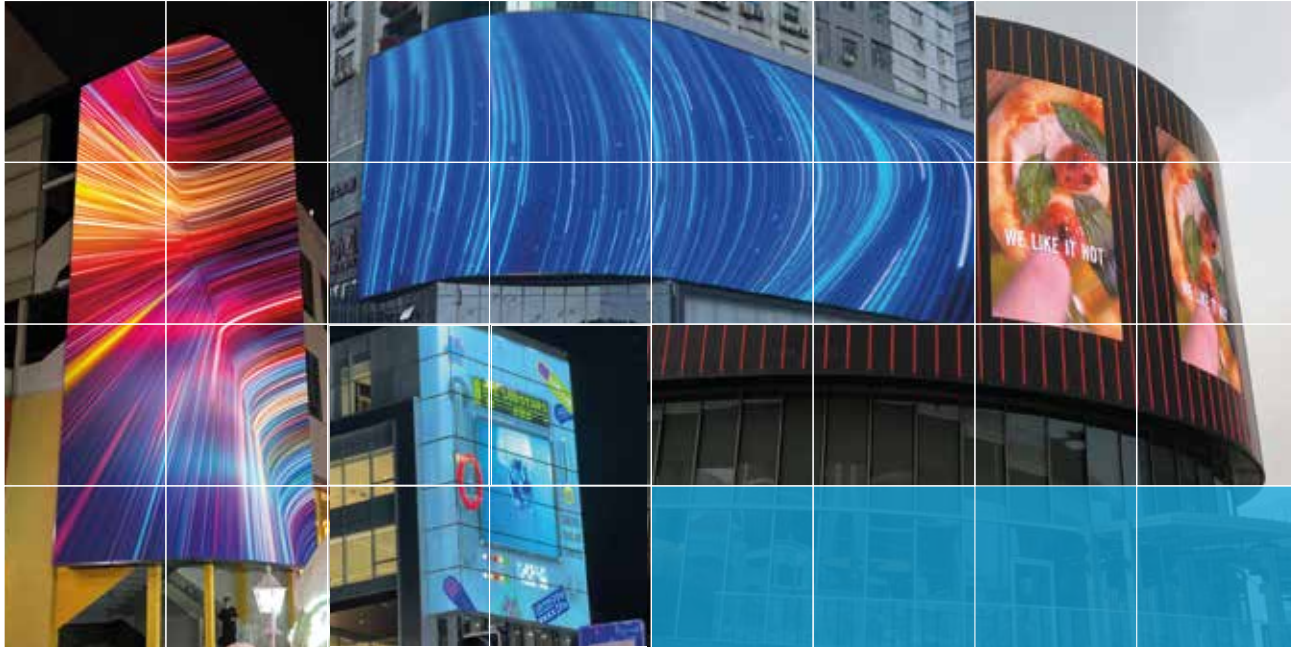


Rear-installation



▶ NSELED CASES

▷ Shopping Mall, DOOH, Billboard Advertisement, Street Signage, Stadiums, etc.



SPECIFICATION - OTV Series 960

Type	Parameters-960 Series		
Model:	OTV Series-960	OTV Series-960	OTV Series-960
Pixel pitch	6.67	8	10
Density	22,477	15,625	10,000
LED Type	SMD2727	SMD3535	SMD3535
Pixel type	1R1G1B	1R1G1B	1R1G1B
Module size	480 x 320 mm	480 x 320 mm	480 x 320 mm
Module Resolution	72 x 48	60 x 40	48 x 32
Cabinet Size (H x W)	960 x 960 mm	960 x 960 mm	960 x 960 mm
Cabinet Resolution	144 x 144	120 x 120	96 x 96
Case Material	Aluminium	Aluminium	Aluminium
Case Thickness	60 mm	60 mm	60 mm
Weight	23 Kg	23 Kg	23 Kg
Maintenance	Front&rear	Front&rear	Front&rear
Drive mode	6S	5S	4S
LED Brand	Nationstar / MTC	Nationstar / MTC	Nationstar / MTC
Brightness	6.500 / 8.000 nits	6.500 / 8.000 nits	7.000 / 8.000 nits
Refresh rate	3840 Hz	3840 Hz	3840 Hz
Voltage	110-220 V	110-220 V	110-220 V
Maximum Power Consumption	500W/sqm	600 W/m ²	600 W/m ²
Average Power Consumption	180 W/m ²	180 W/m ²	180 W/m ²
Operating Temperature	-25°C~45°C	-25°C~45°C	-25°C~45°C
Working Humidity	10%~95%	10%~95%	10%~95%
IP Rating	IP65	IP65	IP65
Viewing Angle	140°	140°	140°
Control method	Async&sync	Async&sync	Async&sync
Application	Outdoor (DOOH)	Outdoor (DOOH)	Outdoor (DOOH)

SPECIFICATION - OTV Series 1000



For more information
www.nseled.eu

Type	Parameters-1000 Series	
Model:	OTV Series-1000	OTV Series-1000
Pixel pitch	3.9	7.8
Density	65,746	16,437
LED Type	SMD1921	SMD2727
Pixel type	1R1G1B	1R1G1B
Module size	500 x 250 mm	500 x 250 mm
Module Resolution	128 x 128	64 x 64
Cabinet Size (H x W)	1000 x 1000 mm	1000 x 1000 mm
Cabinet Resolution	256 x 256	128 x 128
Case Material	Aluminium	Aluminium
Case Thickness	60 mm	60 mm
Weight	24 Kg	24 Kg
Maintenance	Front&rear	Front&rear
Drive mode	8S	4S
LED Brand	Nationstar / MTC	Nationstar / MTC
Brightness	6.500 / 8.000 nits	6.500 / 8.000 nits
Refresh rate	3840 Hz	3840 Hz
Voltage	110-220 V	110-220 V
Maximum Power Consumption	430W/sqm	600 W/m ²
Average Power Consumption	180 W/m ²	180 W/m ²
Operating Temperature	-25°C~45°C	-25°C~45°C
Working Humidity	10%~95%	10%~95%
IP Rating	IP65	IP65
Viewing Angle	140°	140°
Control method	Async&sync	Async&sync
Application	Outdoor (DOOH)	Outdoor (DOOH)

NSELED Europe srl
 Via Marco d'Agrate 41/B
 20139 Milano Italia
info@nseled.eu
 T. +39 02 50042152

