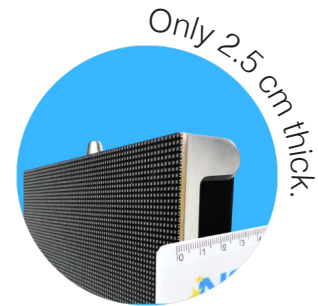


Ultra Slim Wall Mounted LED Display

NSELED **ultra slim** wall-mounted LED display **unlocks more possibilities** with lighter and slimmer designs. **50% lighter** compared with similar products. A golden display ratio of 16:9 can provide you a **better visual enjoyment**.



Fine pixel pitch available
(1.25 mm, 1.56 mm, 1.875 mm)

16:9 Golden Ratio

Advanced UHD
(2K, 4k, 8k Experience)

Smart LED module

Dust-proof, moisture-proof, corrosion-proof.

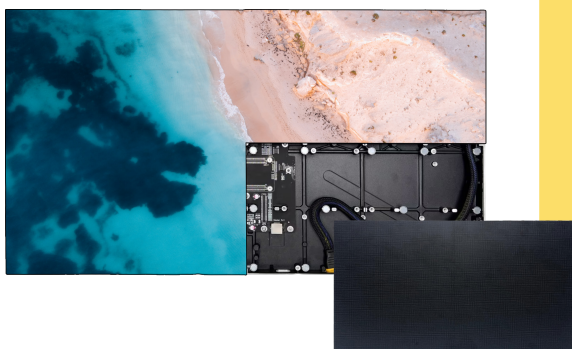
Full Front Service



NSE fine pitch LED displays can be tailor-made to fit a variety of applications, including: Meeting space, Marketing, Movie theaters, Fitness trackers, Houses of worship, Shopping malls, Monitoring centers, Jewelry stores

Specification

Series No.	USI126033	USI156033	USI186033
Pixel Pitch	1.25mm	1.56mm	1.875mm
Pixel Density/m ²	640,000 dots	409,600 dots	284,444 dots
LED Lamp	SMD1010	SMD1212	SMD1515
Module Size	300mm*168.75mm	300mm*168.75mm	300mm*168.75mm
Module Resolution	240* 135dots	192* 108dots	160* 90dots
Cabinet Size	600*337.5mm	600*337.5mm	600*337.5mm
Cabinet Resolution	480*270 dots	384*216 dots	320*180 dots
Cabinet material	Die-Casting aluminum	Die-Casting aluminum	Die-Casting aluminum
Cabinet Weight	5.2kg/Panel	5.2kg/Panel	5.2kg/Panel
Maintenance Type	Front	Front	Front
Drive Mode	1/45	1/54	1/30
View angle	140°/140°	140°/140°	140°/140°
Refresh Rate	3840HZ (high refresh rate)	3840HZ (high refresh rate)	3840HZ (high refresh rate)
Brightness	≥ 600 cd/m ²	≥ 800 cd/m ²	≥ 800 cd/m ²
Environment	IP20	IP20	IP20
Max Power Consumption	800W/m ²	800W/m ²	800W/m ²
Avg Power Consumption	240W/m ²	240W/m ²	240W/m ²
Voltage	AC100-240V	AC100-240V	AC100-240V
Certificate	CE/EMC/FCC/ROHS/CCC	CE/EMC/FCC/ROHS/CCC	CE/EMC/FCC/ROHS/CCC



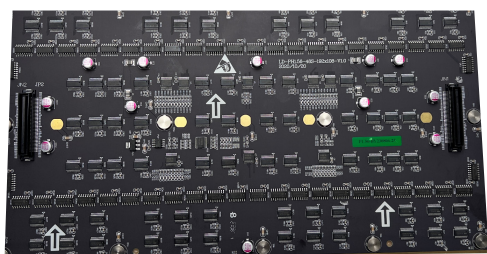
Front Maintenance Design

Realizing LED module, power supply and receiving card could be front or rear maintenance, save your time and labor cost.



16:9 Golden Ratio

Standard 27.5"Size
FHD/4K Pixel to Pixel Resolutions



Dust Proof

The surface of PCB is painted with three-proofing lacquer, which can from a protective film, dust-proof, moisture-proof, corrosion-proof, and protect PCB from malfunction, prolong its lifespan.